



The Ultimate Spool Holder



G.design

[VIEW IN BROWSER](#)

updated 26. 4. 2023 | published 26. 4. 2023

Summary

Minimalist filament spool holder.

[3D Printers](#) > [Accessories](#)

Tags: [prusa](#) [spool](#) [holder](#) [mini](#) [filament](#) [3dprinting](#)
[filamentspoolholder](#) [mk3s](#) [prusai3mk3](#) [3dprinted](#)
[prusamini](#)

The **ULTIMATE** filament spool holder.

IMPORTANT, PLEASE READ:

1. If you have problems with tolerances, please print **this model** by Asraff Amzani (thanks, for) and carefully read the descriptions.
2. Higher the resolution, better the tolerances

PRINTING TIP - avoid any kind of seams alignment, when printing the rollers. This will keep them balanced.

UPDATE 26.04.2023:

1. Removed logos from the rollers for avoiding rattling when the spool rolls over.

2. All bases have been redesigned, so now they have “nests” for 10x2 mm or 10x3 mm circular magnets or rubber/feather/silicone pads.

UPDATE 20.01.2023:

Added base without pattern.

A wall mounting console can be downloaded from [here](#).

UPDATE 28.10.2022:

Added roller and rail for 2 kg spools (122 mm wide).

UPDATE 17.06.2022:

Added instructions in the photos section.

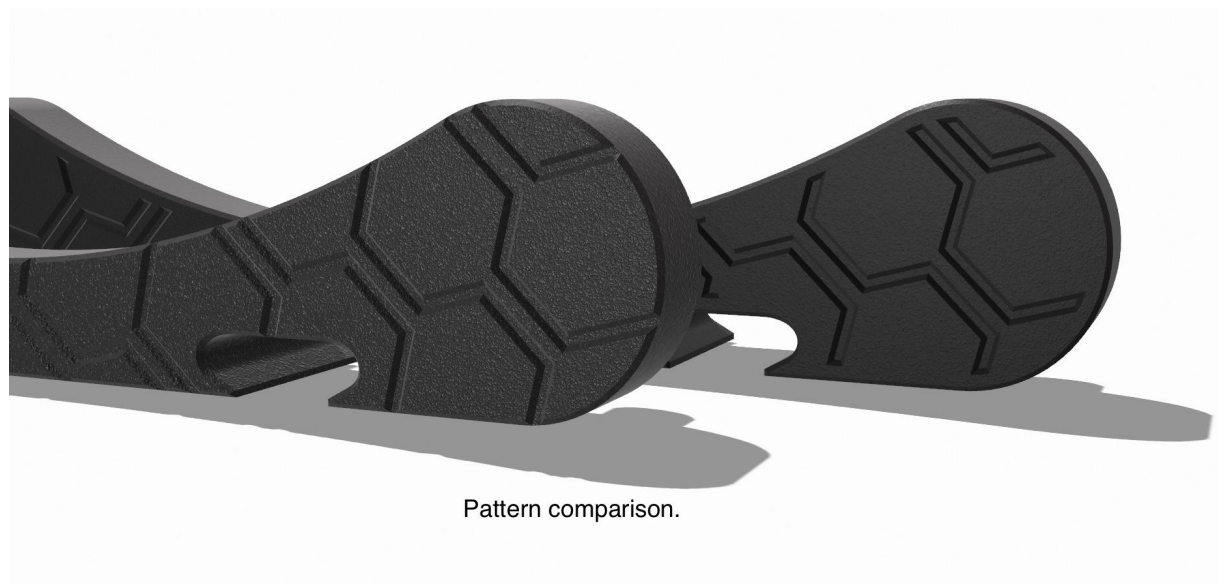
.....

UPDATE 28.04.2022:

The spool holder was totally redesigned, mostly due to printing and tolerances optimization.

UPDATE 24.02.2022:

Added new pattern. The difference - pattern-2 has a narrow contour strip around the base.



Update 24.01.2022:

Apologies to everyone! I forgot to upload the rollers... . Done ☒.

Sorry about that!

Update 28.12.2021:

All files has been slightly tuned.

Update 27.12.2021:

Aded two new bases, so now you can connect two or more spool holders together using 2xM3x12 mm screws and 2xM3 hexagonal nuts.

=====

Extremely efficient and flawless design.

The purpose of the inner rings around the rollers is to avoid the movement of the spool aside over them (if there is any). They are symmetrical, so you don't need to care on which side the edges of the spool are in between. They are not meant to constrain the dimensions of the spools.

To put it together You'll need:

4xM3x10 mm screws;

2xM3x12mm screws (for the connectable bases)

4(6)xM3 hexagonal nuts;

4x608 ball bearings.

I hope you guys enjoy this.

P. S.

Don't for get the ♥ and pls...

Model files



3mf_base-connectable-screw-side.3mf



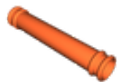
3mf_base-pattern-2.3mf



3mf_rail.3mf



3mf_rail-2kg-spool.3mf



3mf_roller-2kg-spool-nl.3mf



3mf_base-pattern-1.3mf



3mf_base-connectable-nut-side.3mf



3mf_base-no-pattern.3mf



3mf_roller-nl.3mf

License

This work is licensed under a
[Creative Commons \(4.0 International License\)](https://creativecommons.org/licenses/by-nc-sa/4.0/)



Attribution—Noncommercial—Share Alike

✗ | Sharing without ATTRIBUTION

- ✓ | Remix Culture allowed
- ✗ | Commercial Use
- ✗ | Free Cultural Works
- ✗ | Meets Open Definition